

The logo for TOPCON, featuring a blue stylized leaf-like symbol to the left of the word "TOPCON" in a bold, white, sans-serif font with a slight 3D effect.

**TOPCON**





# **CRR for Asset development and Maintenance**

**John Foster – BIM Business Development Manager - Europe**

**Lisbon, 28<sup>th</sup> May 2015**

# CRR Continuous Representation of Reality



**Our Vision  
For Industries we serve**



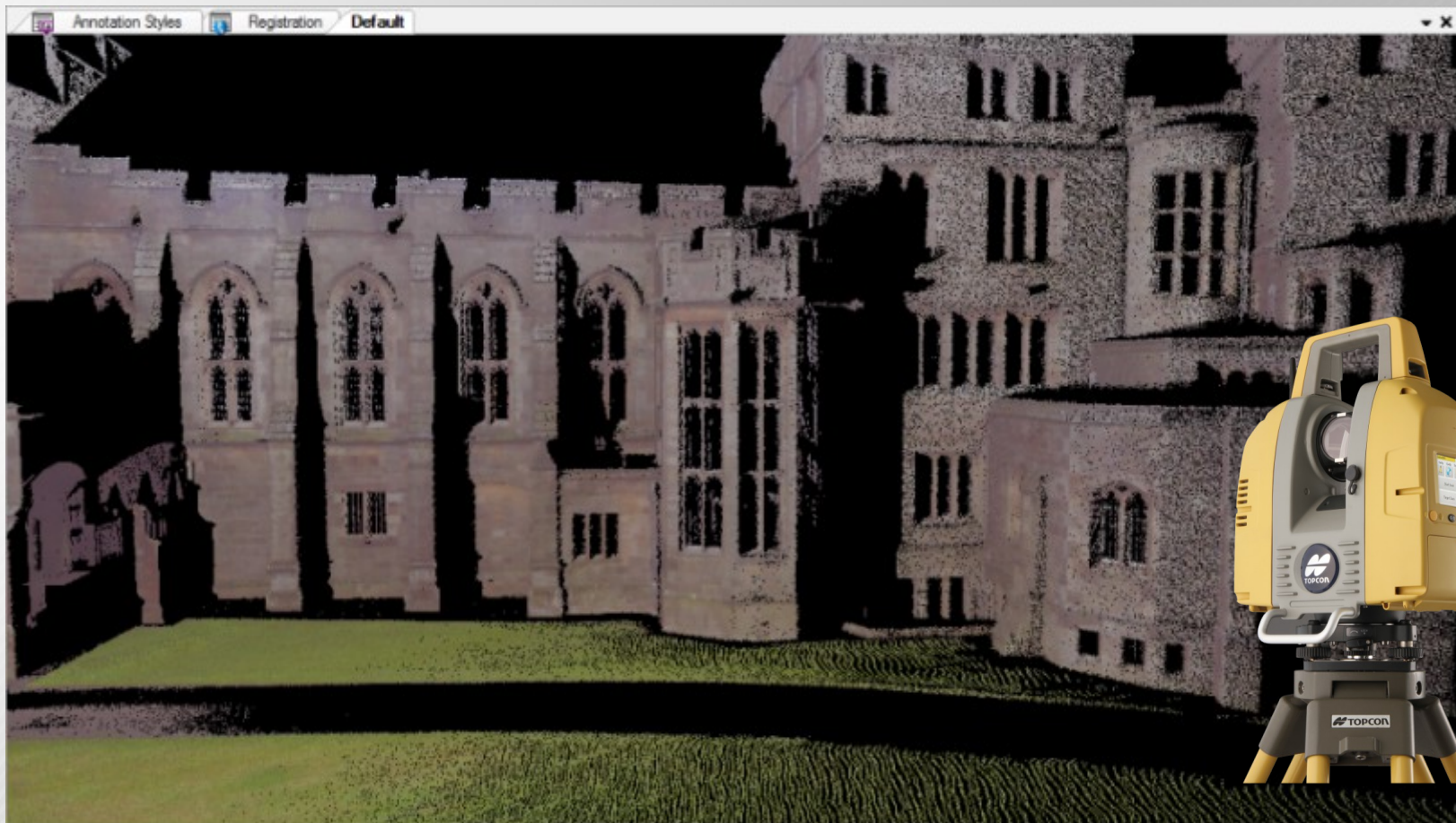
# CONTINUOUS REPRESENTATION **OF REALITY**





# TERRESTRIAL SCANNING

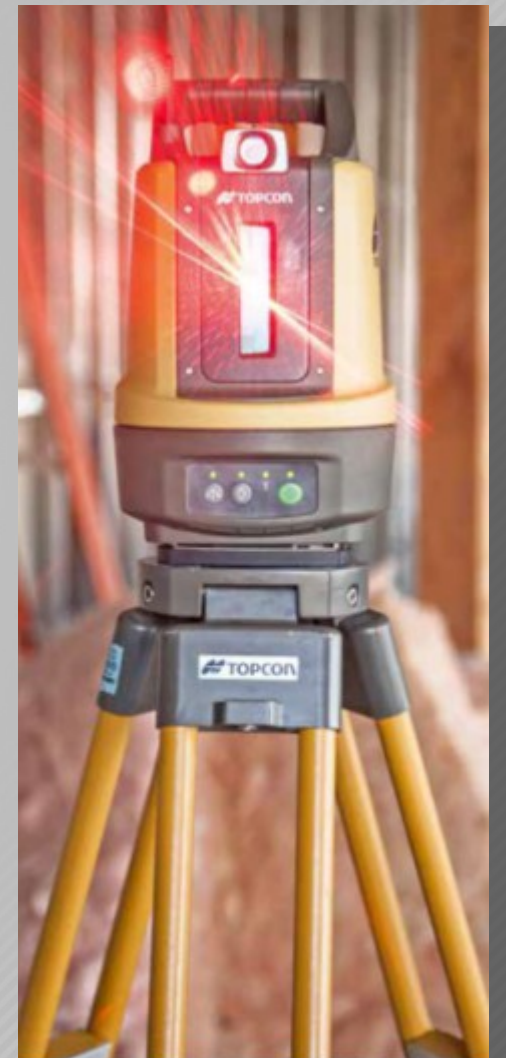
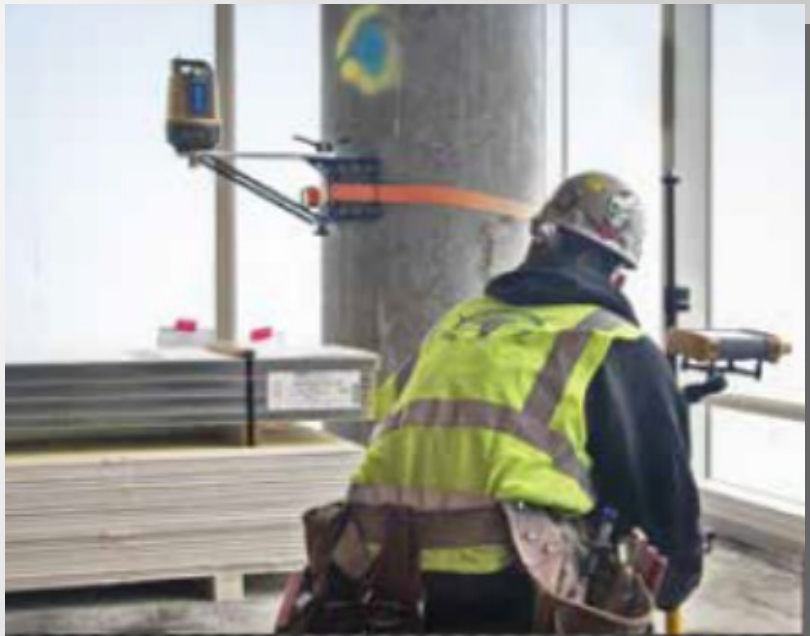
+ BIM Workflow Integration



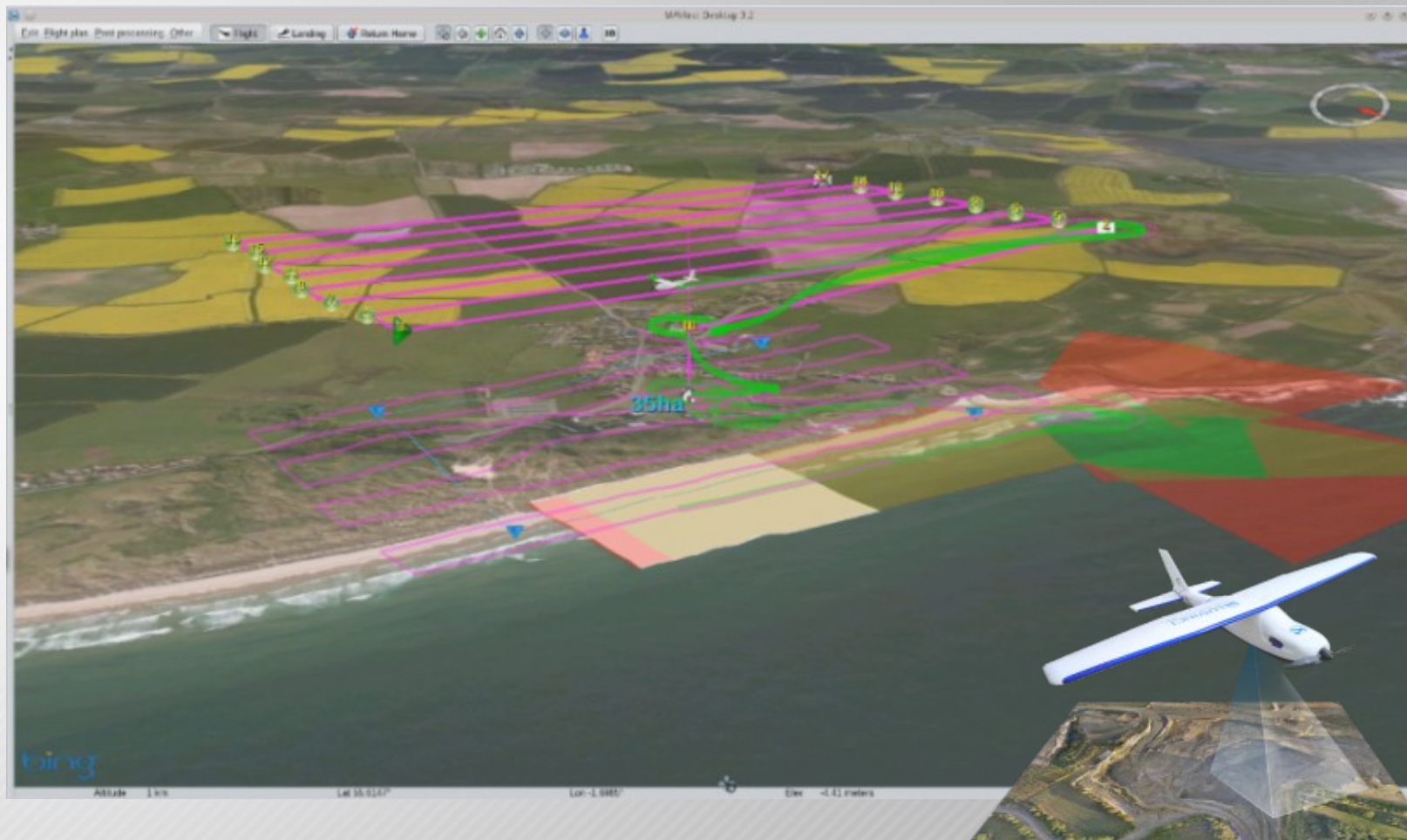


# DIGITAL LAYOUT

+ BIM Workflow Integration



# AERIAL MAPPING





# MOBILE MAPPING



# GNSS & TOTAL STATION **TRADITIONAL SURVEY**





# CRR + BIM - Capture and Consume **WORKFLOWS**

- ▶ **Design Stage:**

  - existing site condition to office ⇐ clash avoidance

- ▶ **Construction Stage:**

  - office to field ⇐ clash avoidance, layout/QA, progress

- ▶ **O&M Asset Management:**

  - Continuous Representation of assets/facility



# Mobile Mapping

A Revolution in the way we map



# Advantages

- ▶ **Speed**
- ▶ **Cost**
- ▶ **Safety**
- ▶ **Completeness**
- ▶ **Collect once, use many**



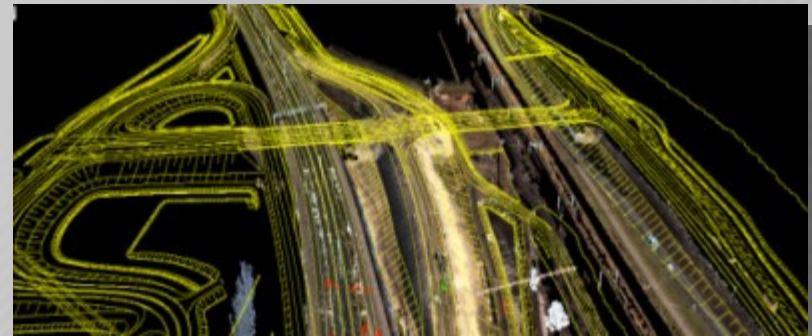
# Mobile Mapping Applications





# Mobile Mapping Applications

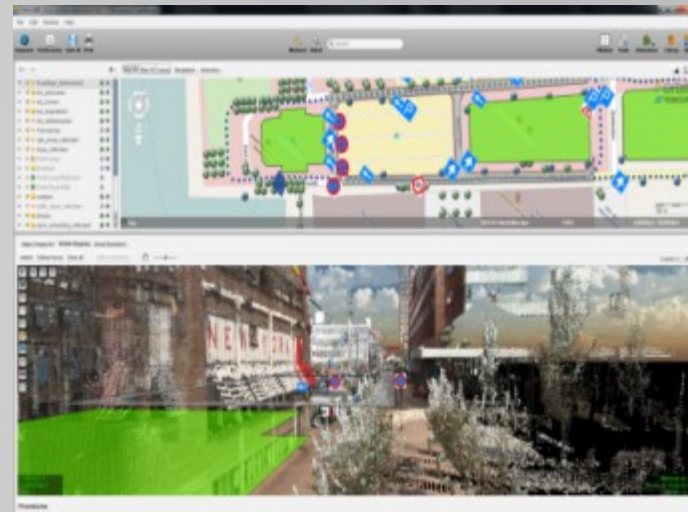
- ▶ **Asset Management**
- ▶ **Topographic mapping**
- ▶ **Survey**
- ▶ **Geo-enabled applications**



# Asset Inventory

Geo-reference and add meta-data to objects

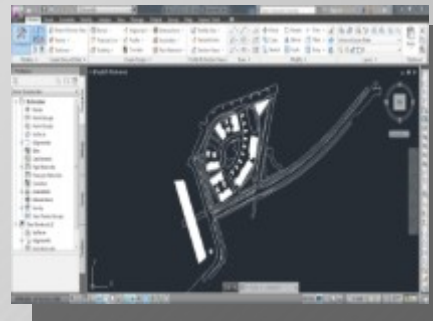
- ▶ Road markings
- ▶ Traffic signs
- ▶ Light poles
- ▶ Trees
- ▶ Road damage
- ▶ Power lines
- ▶ Any street(side) object



# Topographic mapping

Create and update line and object oriented maps

- ▶ GIS enabled
- ▶ Integrate in CAD workflow

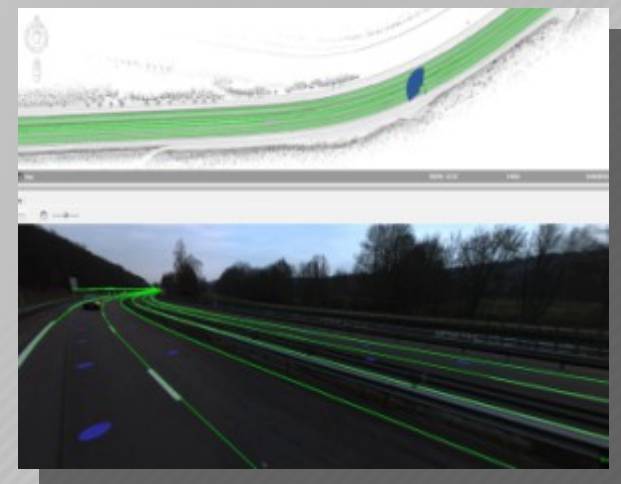




# Automatic indexing of reality

Object recognition, classification and geo-referencing

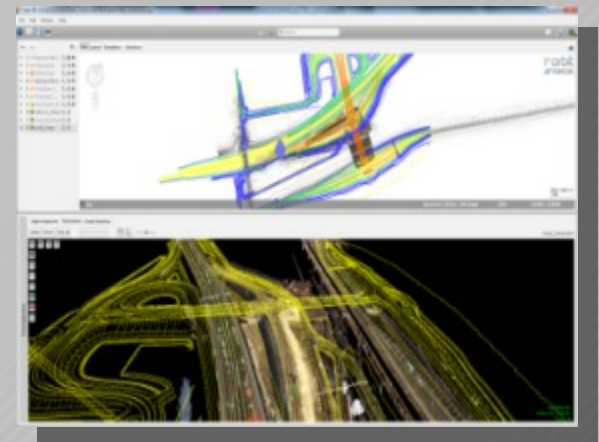
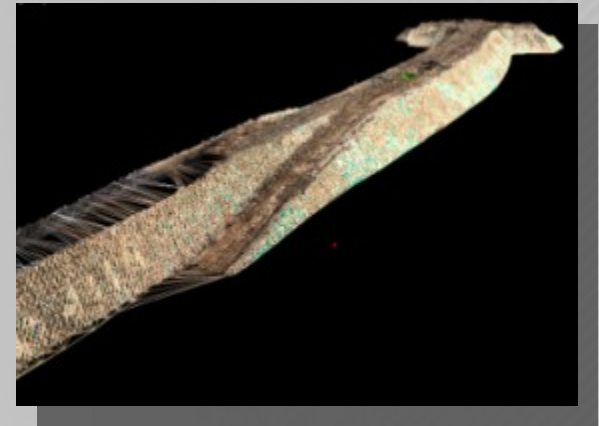
- ▶ Traffic signs
- ▶ Road Markings
- ▶ Railway tracks
- ▶ Clearances



# Survey

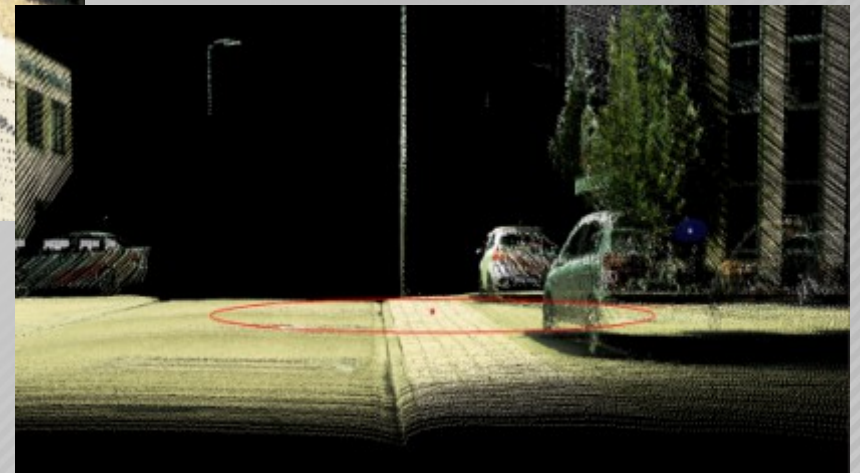
For construction, open pit mines, quarries

- ▶ **Create**
  - DEMs, TINs
- ▶ **Analyze**
  - Volumes, sections
- ▶ **Compare**
  - Design versus as-built



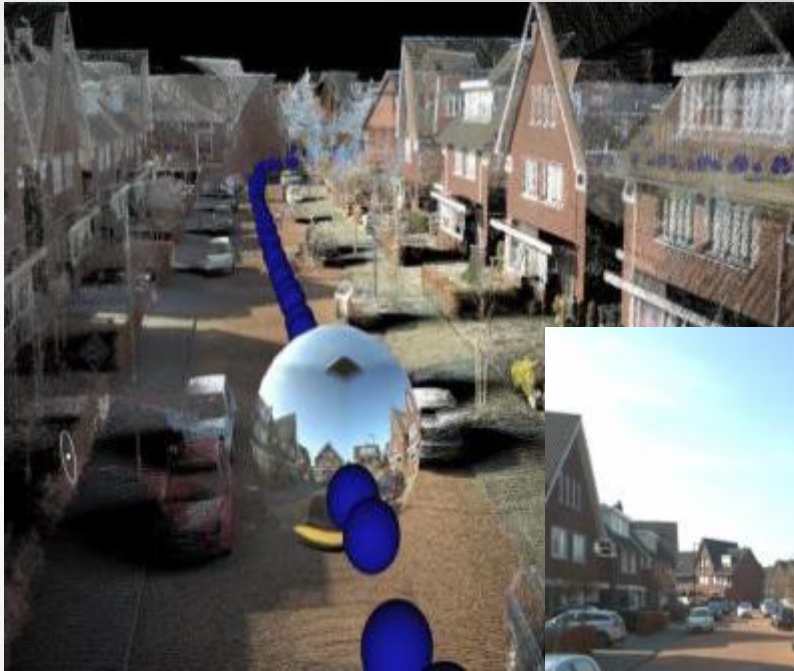


# 3D point cloud





# 3D Experience



# Project: mapping a city centre

Project brief:

**Produce as-built documentation prior to development planning .**

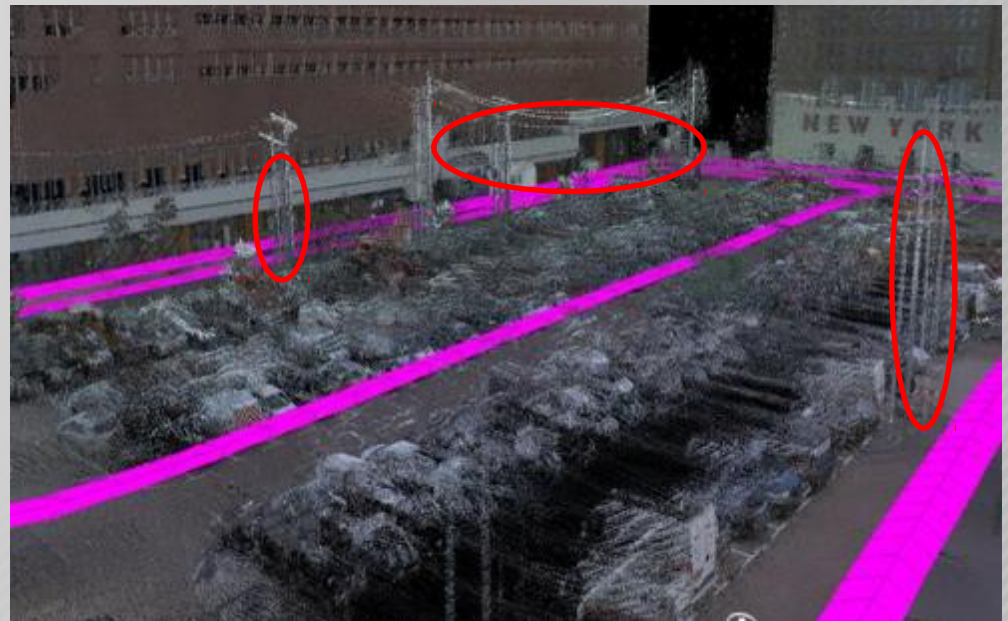
38 km, 1 h 37 mins, 6911 images, 2.2 billion scan points

How else could you do this?

e.g **Tokyo City Centre**

Recently Completed

– billions of points



Double poles: passes don't match



## Survey of Tower Bridge to Create Point Cloud Image

from [LandScope Engineering Ltd](#)

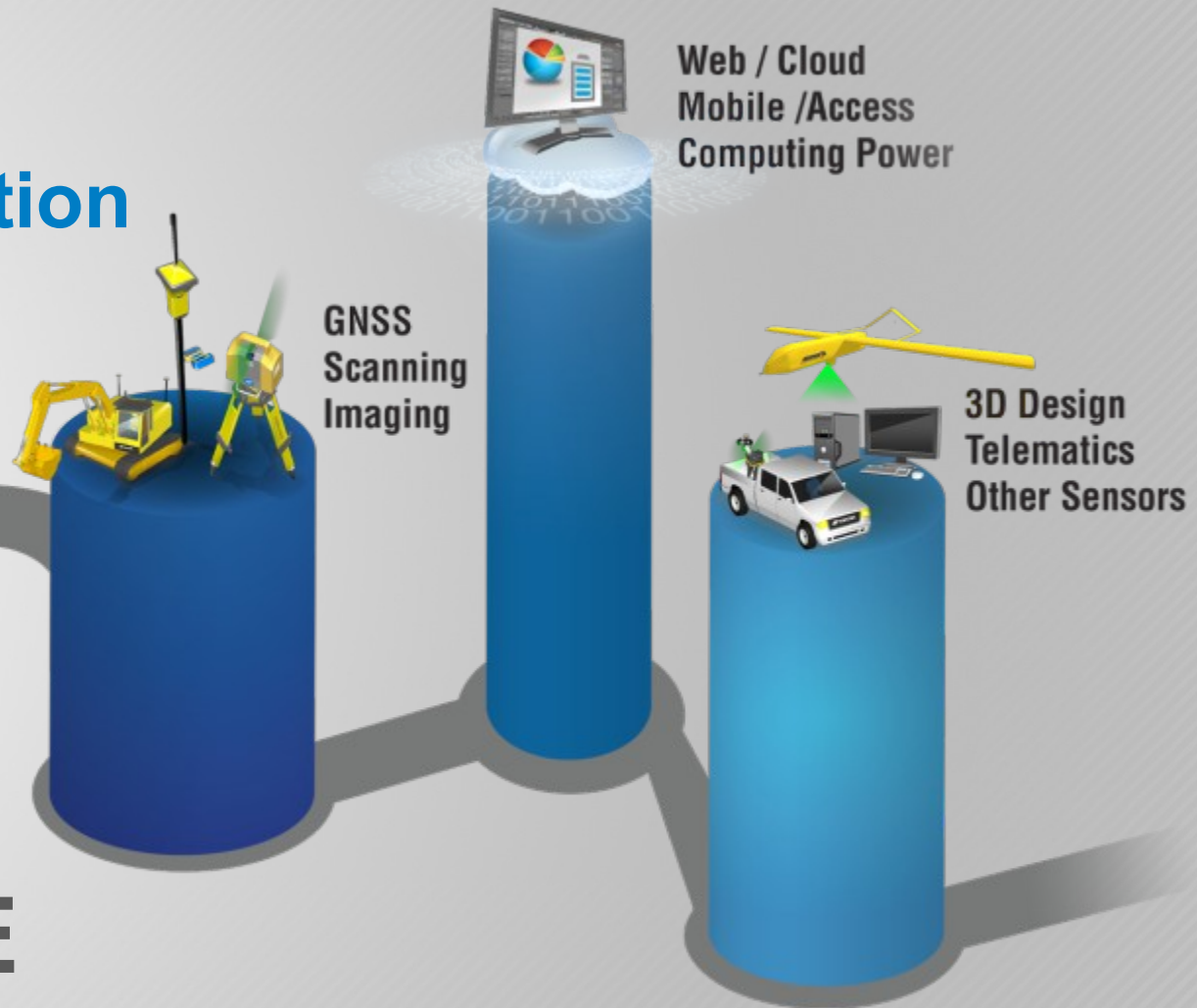
Working with the Port of London Authority, LandScope utilised the autoMAP Mobile Mapping Service to provide a point cloud to compliment multi-beam echo sounder data collected around Tower Bridge.





# CRR Continuous Representation of Reality

A MAJOR  
ENABLER of  
**CHANGE**



# OUR VISION



**YOUR PRODUCTIVITY.  
TECHNOLOGY.**